

# View Point

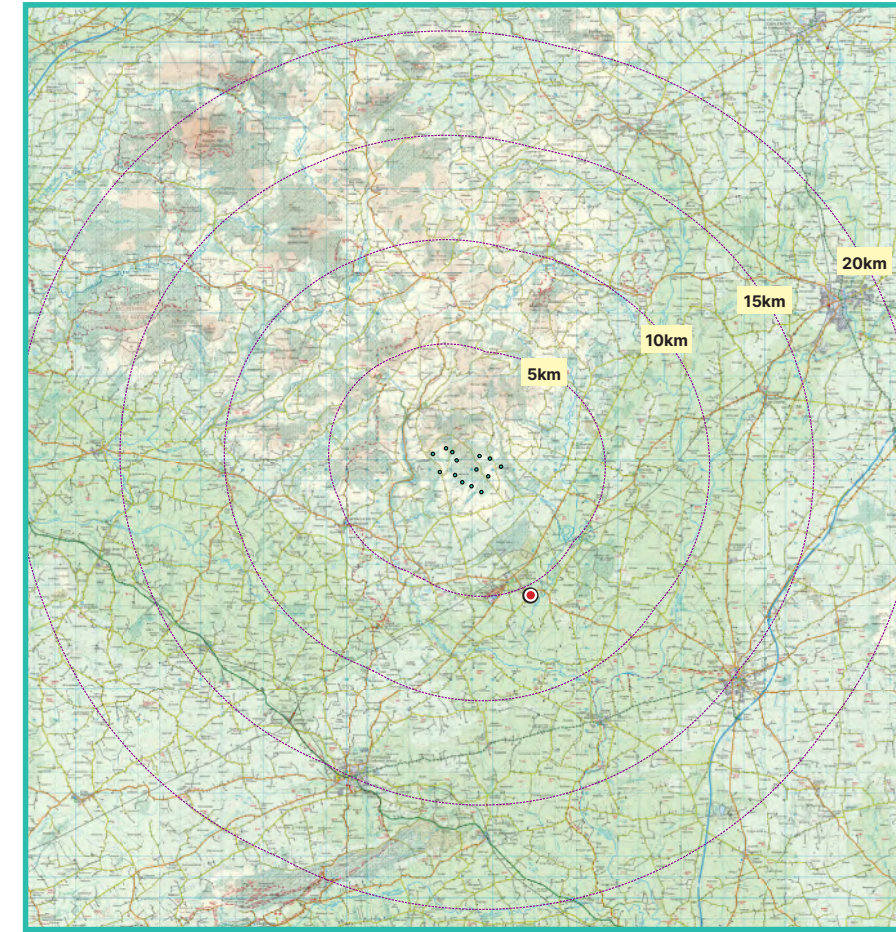
# 14

# R505 at Dundrum

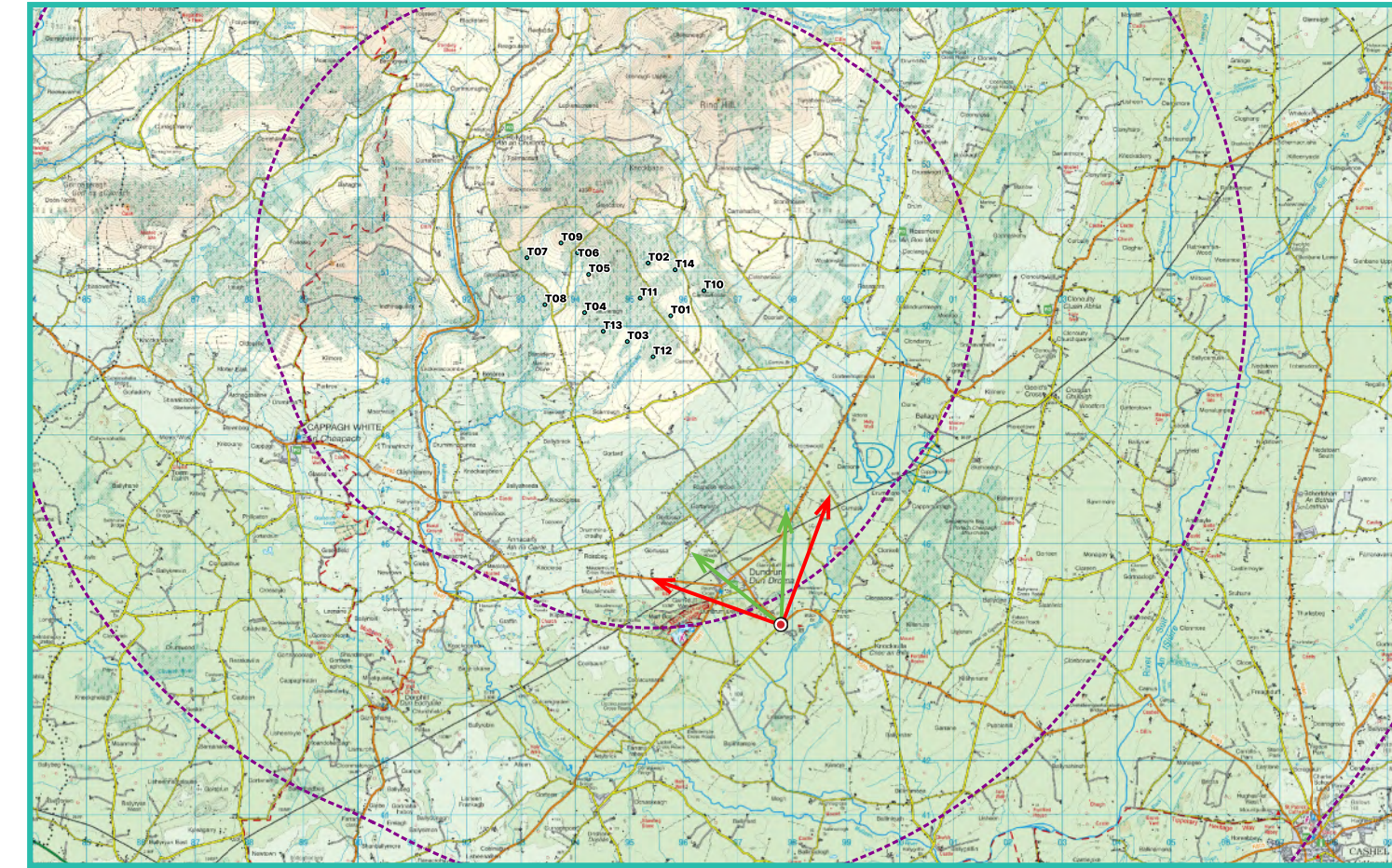
## Photomontage 14

View from the R505 Regional Road in the townland of Dundrum. Located approximately 5.5km south-east of the nearest turbine (T12).

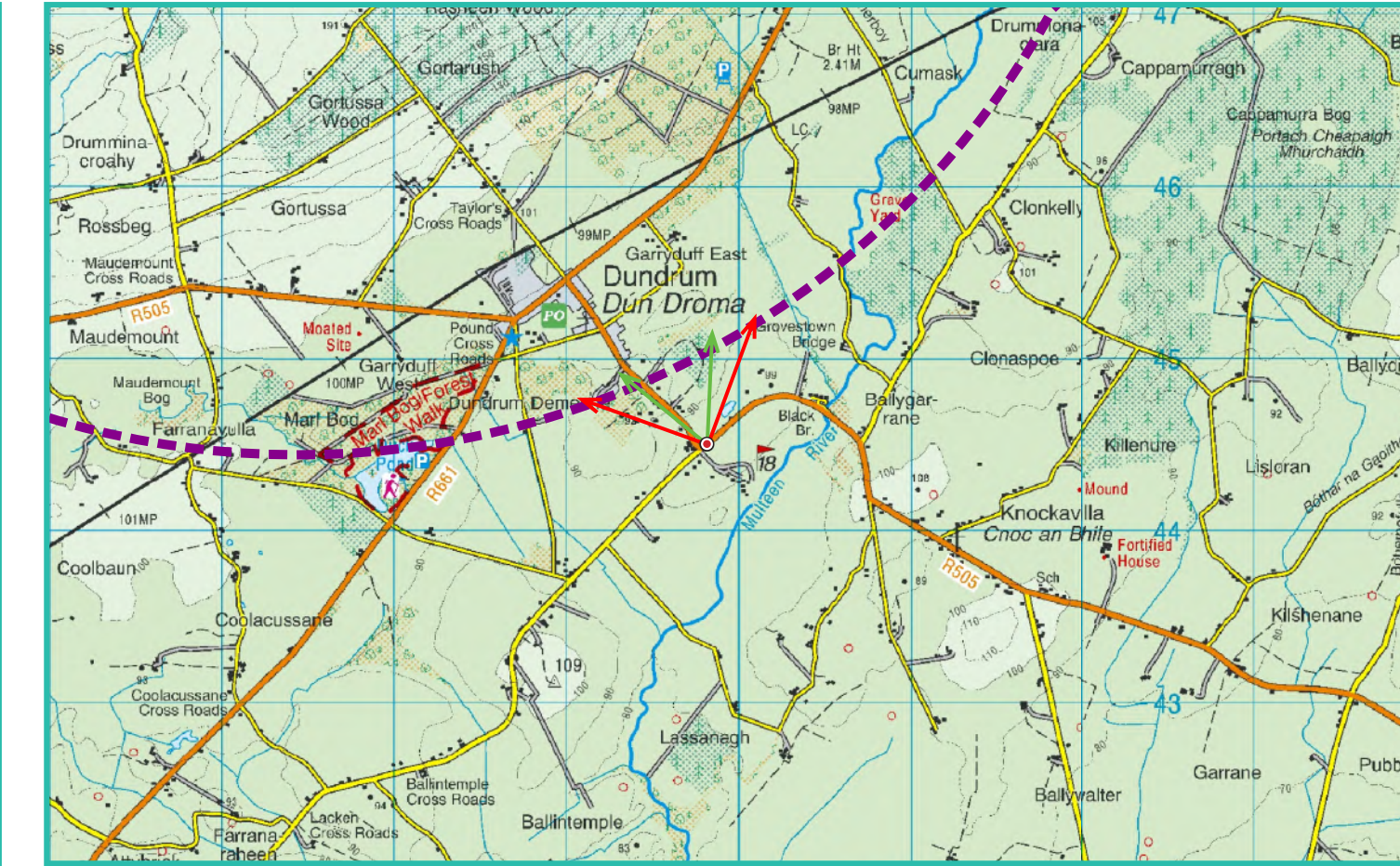
View point grid reference	E 597771 N 644546
Date of image taken	2024-11-26
Time of image taken	15:02
View point elevation	99m
Angle of Views	90° / 53.5°
View Direction (Image Centre)	335°
Number of proposed turbines visible in Photomontage	14/14
Turbine Hub Height	103.5m
Turbine Rotor Diameter	163m
Turbine Tip Height	185m
Montage Type	Type 4 Photomontage / Survey / Scale Verifiable
Camera & Lens	Canon 5D Mark III / Full Frame Sensor with a 50mm Lens
Tripod	Manfrotto 190X extended to approx 1.5m.
Map Licence	© Ordnance Survey Ireland. All rights reserved. Licence number CYAL50267517



View point relative to 20km radius.



View point relative to proposed wind farm site.



Detail of view point location.

### Map Legend

Area shown in 90° view

Area shown in 53.5° view

View Point

Proposed Carrow Wind Farm

### Wireline Legend

Proposed Carrow Wind Farm

Proposed Met Mast (103.5m)

Existing Wind Farms

Permitted Wind Farms

Proposed Wind Farms

Prepared by  
MKO  
Planning & Environmental Consultants  
Tuam Road, Galway.

Tel: (091) 73 56 11  
E-mail: info@mkofireland.ie  
Website: www.mkofireland.ie

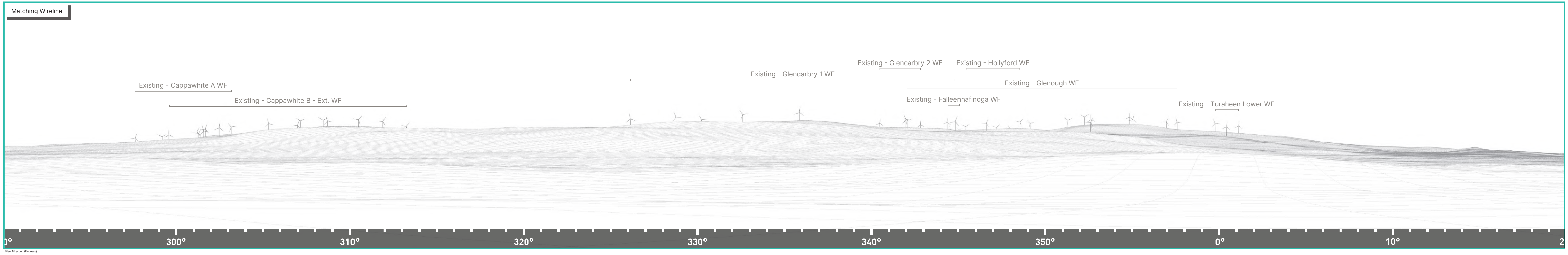


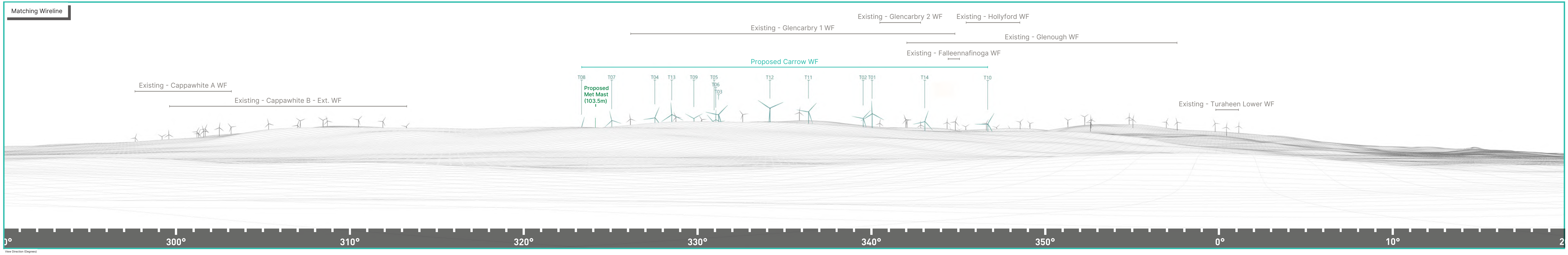
90° View Extent

Key Image at 120°



53.5° View Extent





Proposed Photomontage with Cumulative at 53.5°



310°

320°

330°

340°

350°

0°

Matching Wireline

